

Emeryville Center of Community Life

# Anna Yates Elementary Staff Design Workshop



nexus partners



# Community Workshop 3 Summary

Synthesized Option in Response to Community Input from Workshop 2

## Summary of recent Nexus Partners ECCL Activities

# Community Workshop 3 - Summary

### Areas We Feel Good About

#### Voting Prompt

All participants Subgroup

G-It feels like it can really be used by the community.

B-The multi-use amphitheatre.

L-the respect given the community in doing this process.

F-Separation of HS from Elementary school is good.

E-The security sub-station at the entry to the Community Commons at the San Pablo St. entrance.

I-Physical appearance of the San Pablo St. side - it's pretty, not all buildings.

A-The whole direction it's going in.

J-Good flow for human foot traffic - people walking at the entrances.

K-dual use of the fields.

H-Separation of the community from the school.

D-The public open space inside the Community Commons area.

C-Gateway plaza is working well.

N=Total Number of Votes; Avg.=Total Average  
Div. = Diversity Percentage Value: if 50% vote "1" & 50% vote "10", then Div. = 100; if 100% vote "5", then Div. = 0

...1 to 10 Level of Agreement Scale...

N	Avg	Div	1	2	3	4	5	6	7	8	9	10
23	8.7	7	0	0	0	0	0	2	3	1	11	6
23	8.7	10	0	0	0	0	0	3	3	2	5	10
26	8.7	19	0	0	2	0	0	1	2	2	7	12
23	8.4	12	0	0	0	0	2	2	1	4	7	7
25	8.3	11	0	0	0	0	1	3	4	4	6	7
24	8.1	9	0	0	0	0	0	5	2	8	4	5
25	8	23	1	0	0	0	2	3	1	5	5	8
24	7.8	11	0	0	0	0	0	6	5	5	3	5
23	7.7	11	0	0	0	0	0	7	4	4	4	4
24	7.6	24	1	0	0	0	3	3	5	1	5	6
23	7.2	26	1	0	2	0	0	5	1	7	4	3
22	7	16	1	0	0	0	1	6	3	8	2	1



# Community Workshop 3 - Summary

## Additional Recommendations

### Voting Prompt

N=Total Number of Votes; Avg.=Total Average

Div. = Diversity Percentage Value: if 50% vote "1" & 50% vote "10", then Div. = 100; If 100% vote "5", then Div. = 0

N Avg Div 1 2 3 4 5 6 7 8 9 10  
*...1 to 10 Level of Agreement Scale...*

Voting Prompt	N	Avg	Div	1	2	3	4	5	6	7	8	9	10
All participants Subgroup													
K-Concern about the security - we need more information and details about how the security will take place in a day to day setting.	33	8.5	10	0	0	0	0	0	4	6	3	8	12
Q-we need to make a presentation at a future workshop that shows the flow of the day with a detailed schedule, curriculum, flow, etc.	34	8.5	14	0	0	0	1	1	4	3	3	9	13
C-There's a current planning process by the City for the 53rd and 47th street pedestrian and bicycle crossings - we need to be coordinating with the city on this effort.	30	8.4	10	0	0	0	0	0	4	4	8	3	11
L-More roof-top uses across the whole design - solar panels, green roofs, observatory, sky-lighting.	33	8.4	17	0	1	0	1	0	3	2	7	8	11
M-More centralized and larger location for a school garden with effective access. This means keeping a school garden program and making it visible in the plans.	33	8.2	15	0	0	0	1	0	8	2	5	6	11
A-Increase the size of the Theatre so it can accommodate the whole school.	33	8.1	19	0	0	0	2	3	4	1	5	7	11
P-we need larger community locker rooms with at least three to four showers for the women.	33	7.7	17	0	0	0	2	0	11	2	4	5	9
G-K-8 play areas are too small and need to be bigger.	31	7.6	16	0	0	0	1	1	12	0	5	5	7



# Community Workshop 3 - Summary

## Additional Recommendations

### Voting Prompt

B-Access regarding the public and the students sharing common areas - make sure that the public and the students are separated in the library.

D-There should specified covered Parking for faculty only. (students should not have covered parking)

O-Bike parking - there needs to be at least one area of covered by bike parking.

F-The K-8 play areas should be divided by age group areas better.

N-Traffic flow - overall flow with the roundabout proposal and drop-off. We're concerned with how effective it will be in the real world.

J-We can go taller with some of the buildings to provide more ground floor space.

H-Better physically connect and make closer the arts and STEM Center with the K-8 program.

I-Reconsider the need for a bicycle path along the Emery Bay Village edge. (connecting 47th to 53rd Street)

E-Reconsider having two gyms. (because the public doesn't use the gym at the same times as students).

N=Total Number of Votes; Avg.=Total Average  
Div. = Diversity Percentage Value: if 50% vote "1" & 50% vote "10", then Div. = 100; If 100% vote "5", then Div. = 0

...1 to 10 Level of Agreement Scale...

N	Avg	Div	1	2	3	4	5	6	7	8	9	10
31	7.5	24	0	0	1	1	4	8	2	1	3	11
35	7.4	29	0	3	0	0	5	4	4	5	4	10
32	7.3	23	1	0	0	2	1	10	3	5	2	8
33	7.3	38	2	2	1	0	1	6	2	5	4	10
31	7.1	26	1	0	2	1	2	5	5	6	3	6
32	6	39	4	3	0	0	4	3	8	5	1	4
31	6	23	0	3	0	3	8	7	1	4	3	2
33	5.1	55	9	2	2	1	3	3	2	4	3	4
34	4.9	52	7	4	5	1	2	4	0	4	3	4

# Where we are going...

# What we are doing now...

- Nexus has been working on a Phase 1 for the Conceptual Design
- Phase 1 will be designed to accomplish the co-location of existing k-12 student population along with City of Emeryville community services and other partnerships envisioned for the ECCL
- Phase 1 will be designed to align with the current funding stream
- Phase 2 grows the vision to accommodate anticipated student population growth (1100 -1200)

# Where we are going...

# What we are doing now...

- The full vision of the ECCL remains intact
- Nexus continues to refine site organization, massing and ideal school and community program relationships with a phased approach
- The images on the following pages represent that work









## ECCL Site Massing – Phase 1

AYES Staff Workshop  
December 1, 2011





## ECCL Site Massing – Phase 2

AYES Staff Workshop  
December 1, 2011





## ECCL Site Massing – Phase 1

AYES Staff Workshop  
December 1, 2011





## ECCL Site Massing – Phase 2

AYES Staff Workshop  
December 1, 2011





## ECCL Site Massing – Phase 1

AYES Staff Workshop  
December 1, 2011





# ECCL Site Massing – Phase 2

AYES Staff Workshop  
December 1, 2011





## ECCL Site Massing – Phase 1

AYES Staff Workshop  
December 1, 2011



# COMMUNITY | SCHOOL



## Community & School Boundary – School Hours

AYES Staff Workshop  
December 1, 2011













View 1: from the Corner of San Pablo and 53rd



# 53<sup>rd</sup> & San Pablo Entry

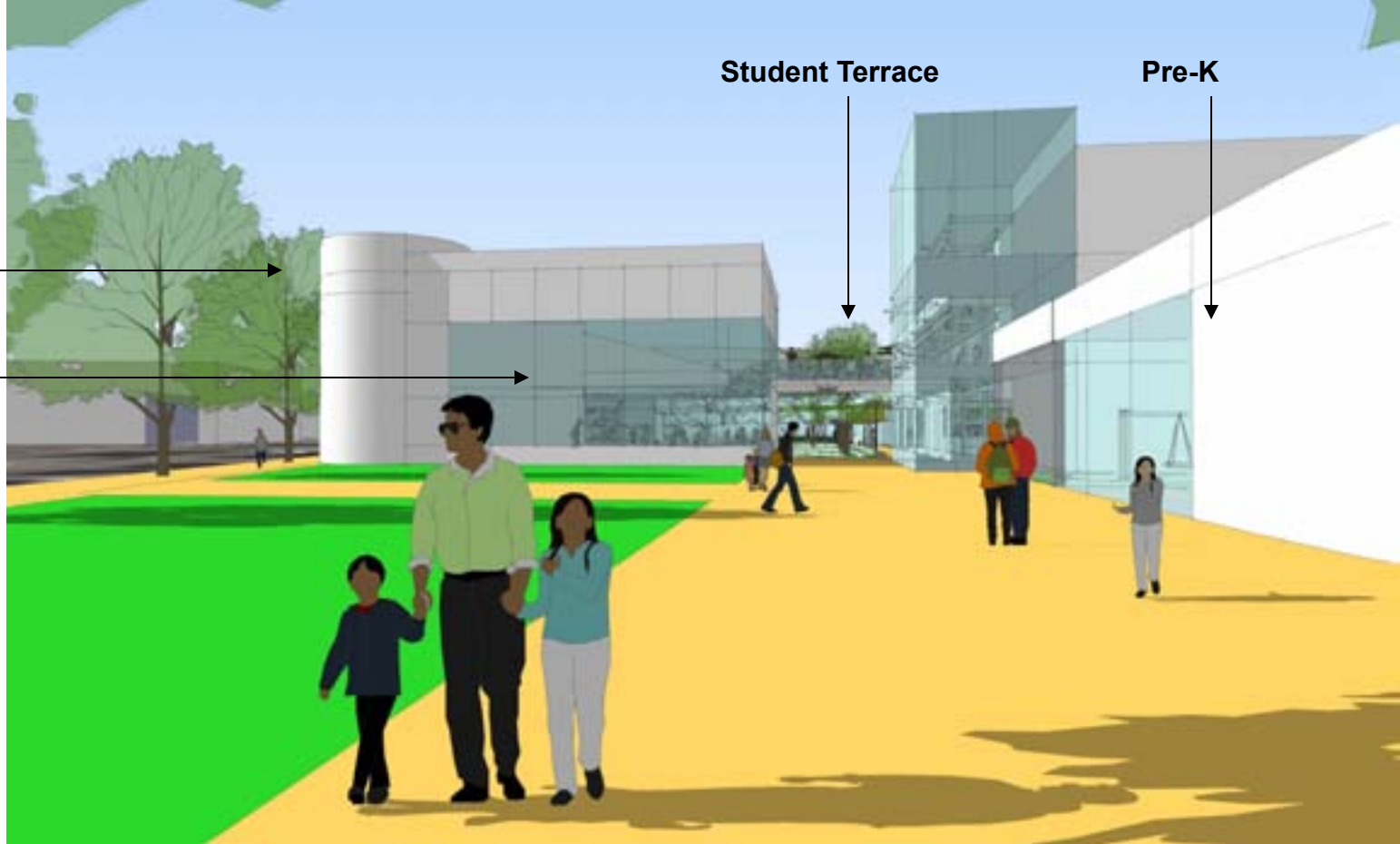
AYES Staff Workshop  
December 1, 2011



Emeryville  
Gateway  
element

Community  
Multi-Use

Community  
Services  
(continues  
through  
Portal into  
Commons  
and along  
San Pablo  
edge



Student Terrace

Pre-K

### Key Ideas:

- Gateway identifies edge of Emeryville per General Plan
- Students separated from public on upper level during school day – Portals can be secured with attractive gates
- Eyes on San Pablo helps discourage undesirable activities
- Convenient access to ECCL Commons from transit stop



# 53<sup>rd</sup> & San Pablo Entry

Activities &  
Program  
Opportunities



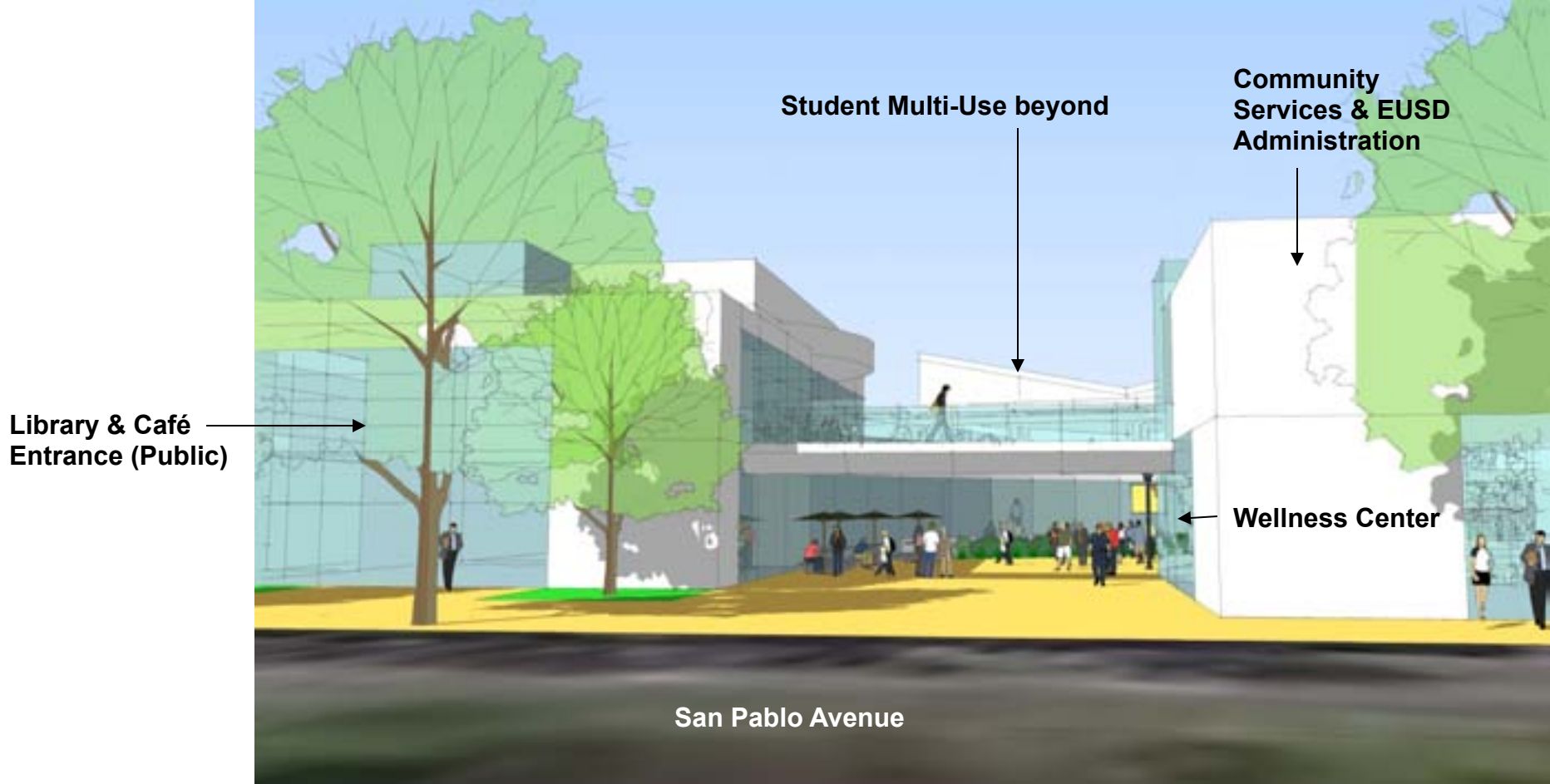


**View 2: Across San Pablo at 48<sup>th</sup> Street**



# Library & Commons Portal

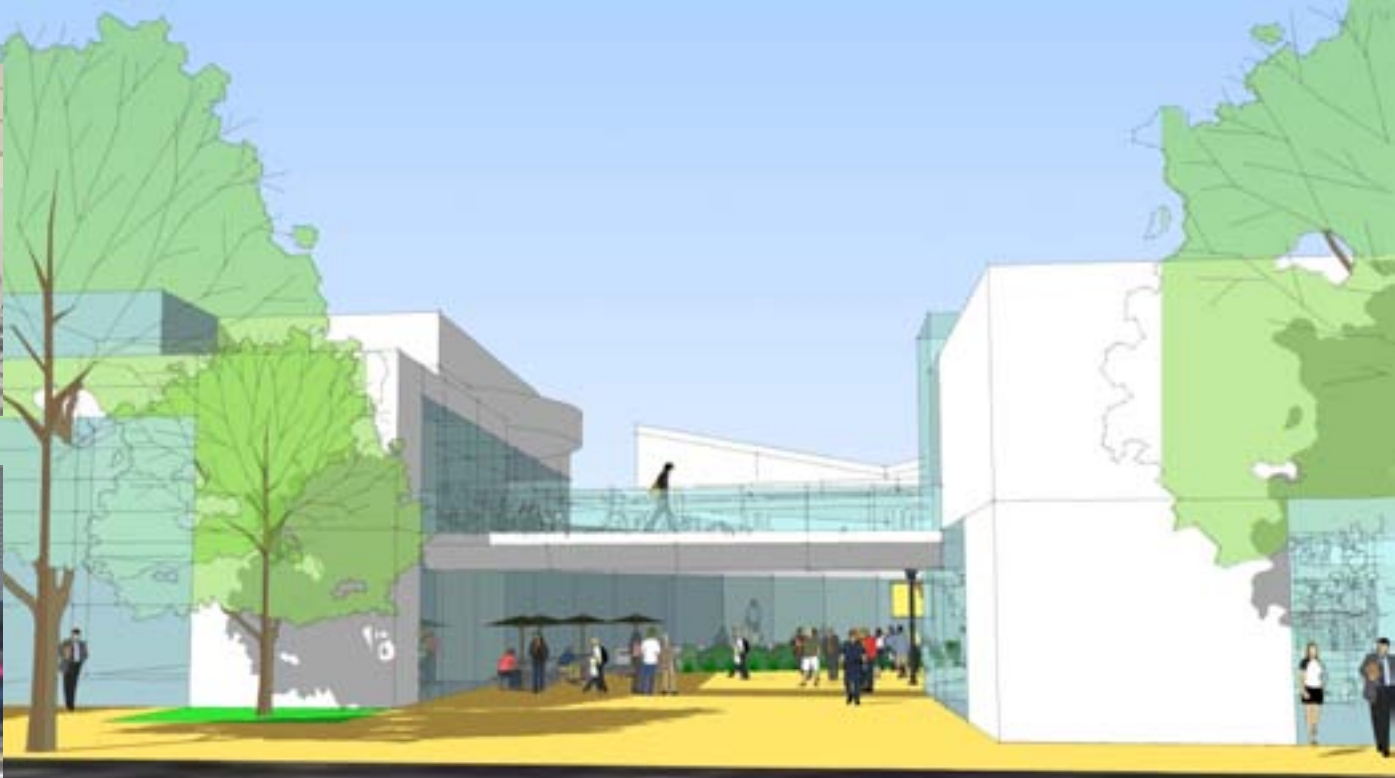
**AYES Staff Workshop  
December 1, 2011**



**Key Portal Ideas:**

- **Frames entry to Community / School Library**
- **Provides for security control point with visibility of both street and commons**





# Library & Commons Portal

Activities &  
Program  
Opportunities



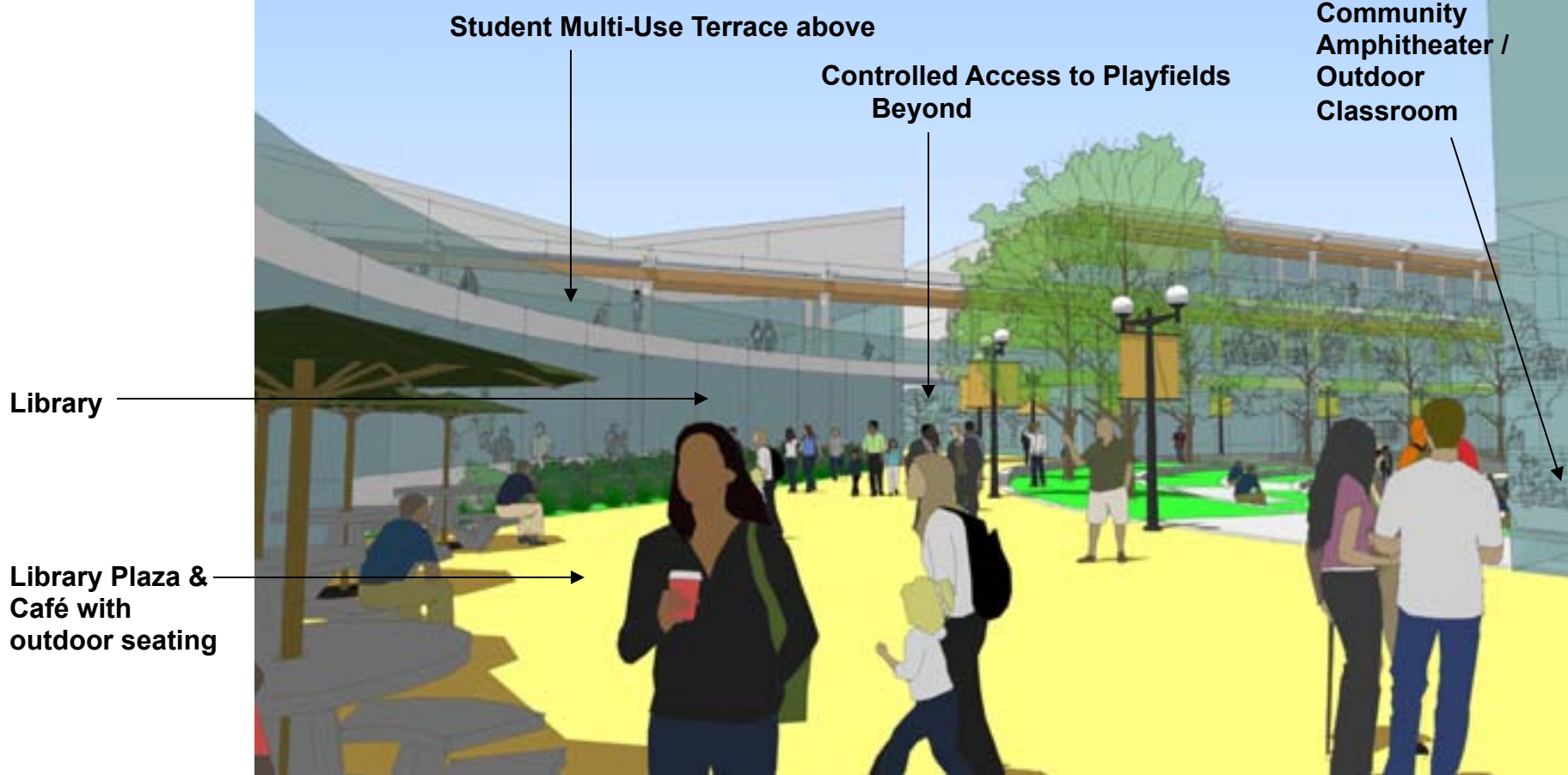
**View 3: from just inside the Library & Commons Portal off San Pablo**



# Library & Commons

**AYES Staff Workshop  
December 1, 2011**





### Key Library & Commons Ideas:

- Library convenient to both public and students
- Library adjacent to Café and outdoor seating
- Commons serves multiple users and supports multiple events



# Library & Commons

Activities &  
Program  
Opportunities





# Animation into Commons

AYES Staff Workshop  
December 1, 2011



**View 4: from the Student Terrace overlooking the Community Commons**



# Community Commons

**AYES Staff Workshop  
December 1, 2011**



School Multi-Use

Student Terrace

Community Amphitheater

Library

Café Plaza

Community Multi-Use & Outdoor Stage



## Key Community Commons Ideas

- Commons supports a wide variety of users, uses and events
- Community Amphitheater expands program opportunities
- Controlled, safe & comfortably scaled space
- Students separated from public on upper level during school day



# Community Commons

AYES Staff Workshop  
December 1, 2011



# A Day in the Life of...

School Day Morning, Non-School Afternoon, Evening

Activities &  
Program  
Opportunities





**View 5: from the Student Terrace overlooking the Community Commons**



**Terrace** (students only during school day)

**AYES Staff Workshop  
December 1, 2011**

Community  
Services  
& EUSD  
Admin

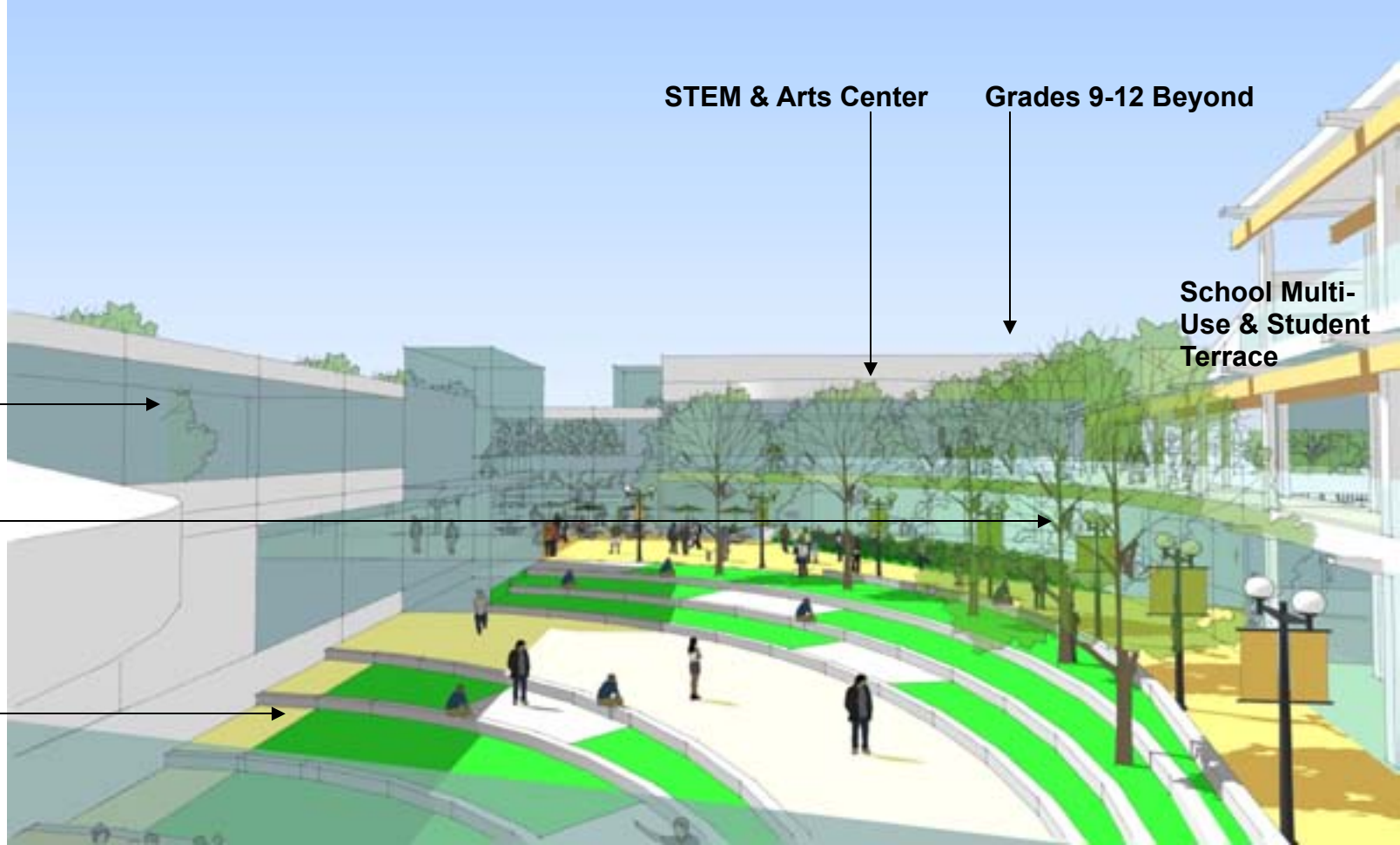
Library

Community  
Amphitheater /  
Outdoor  
Classroom

STEM & Arts Center

Grades 9-12 Beyond

School Multi-  
Use & Student  
Terrace



### Key Terrace Ideas:

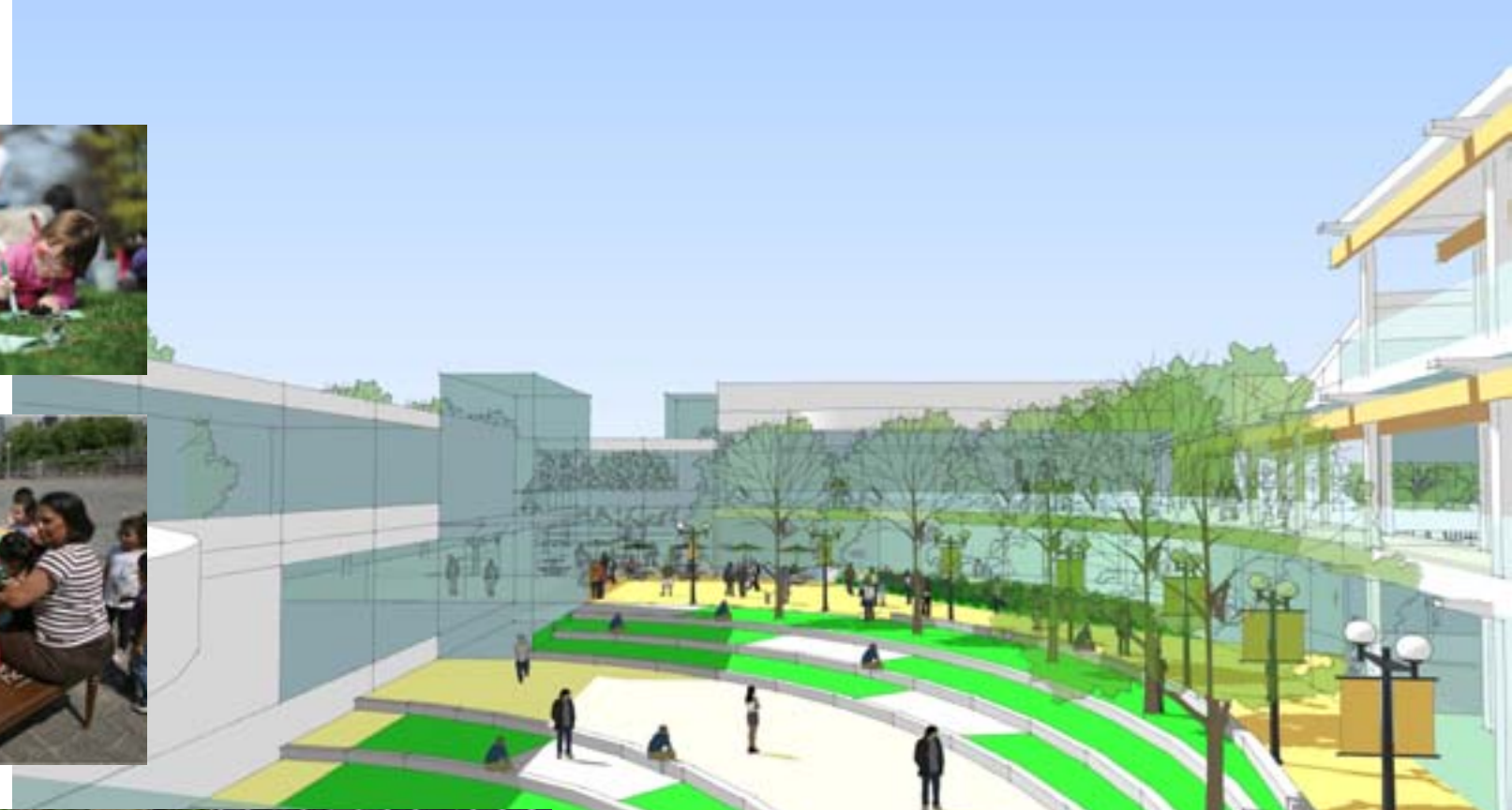
- Students separated from public on upper level during school day
- Community accessible during non-school hours
- Expands community & student space for events and activities
- Provides clear circulation route between programs and spaces



**Terrace** (students only during school day)

AYES Staff Workshop  
December 1, 2011





# Terrace (students only during school day)

**Activities &  
Program  
Opportunities**



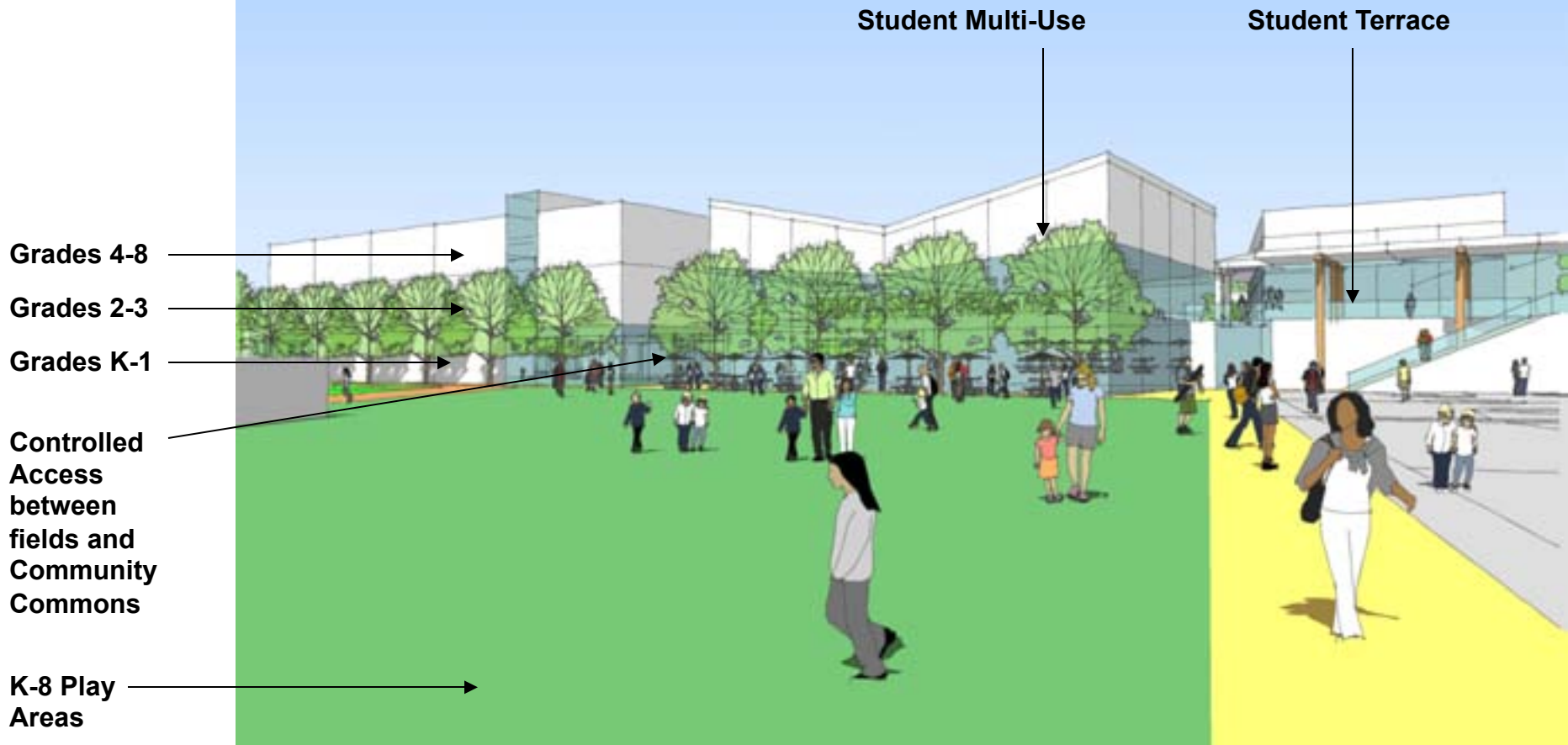
**View 7: from playfields toward School Multi-Use and K-8 classrooms**



# Athletic Fields & Play Areas

**AYES Staff Workshop  
December 1, 2011**





**Key Field & Recreation Ideas:**

- **Multi-Use fields in this area support field play, football, softball and casual activities**



# Athletic Fields & Play Areas

Activities &  
Program  
Opportunities





Note: fence shown is 8'-6" tall

**View 8: from 53<sup>rd</sup> Street looking toward the K-8 School entrance**



**PreK / K-8 School**

**AYES Staff Workshop  
December 1, 2011**

Pre-K  
(drop-off  
daycare)

Drop-Off /  
Pick-Up  
Zone

K-1 Classrooms

4-8 Classrooms

2-3 Classrooms

Play Areas

Play Areas

Landscape Edge  
along Greenway

53<sup>rd</sup> Street

K-8 School Entry

### Key K-8 School Ideas:

- Orientation away from San Pablo – Controlled access during school hours
- K-8 play areas connected to Library, Fields, and Multi-Use





# PreK / K-8 School

**Activities &  
Program  
Opportunities**



View 9: from above Emery Bay Village looking east





The current ECCL design envisions a widened, landscaped edge along 53<sup>rd</sup> St. adjacent to the athletic fields consistent with the Emeryville General Plan

Figure 5.30 from the Emeryville General Plan illustrates the view looking east along 53<sup>rd</sup> St at Emery Bay Village



View 10: from 53<sup>rd</sup> Street near Emery Bay Village



## 53<sup>rd</sup> St. – Key Green Street

AYES Staff Workshop  
December 1, 2011

# Summary

The current conceptual design work:

- Builds and improves upon the core ideas presented by Nexus in 2009
- Respects and incorporates authentic community and staff engagement and input
- Moves forward the goal of a highly utilized, shared use facility
- Achieves the ECCL vision within the available funding stream





## ECCL Site Massing – Phase 2

AYES Staff Workshop  
December 1, 2011